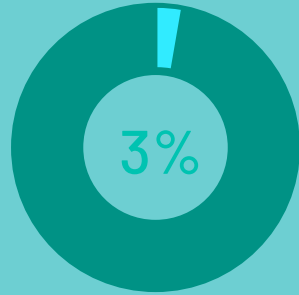
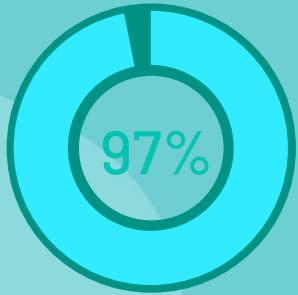


Water

71% OF THE SURFACE OF OUR PLANET



LESS THAN 1% AVAILABLE TO SUPPORT ALL LIFE ON EARTH

WATER PLAYS A HIDDEN ROLE IN OUR DAILY LIFE

IN 24 HOURS MOST PEOPLE WILL ACTUALLY CONSUME AROUND 3000 LITERS OF WATER:



4.4%
to factories



3.6%
to humanity's water
consumption



92%
to agriculture

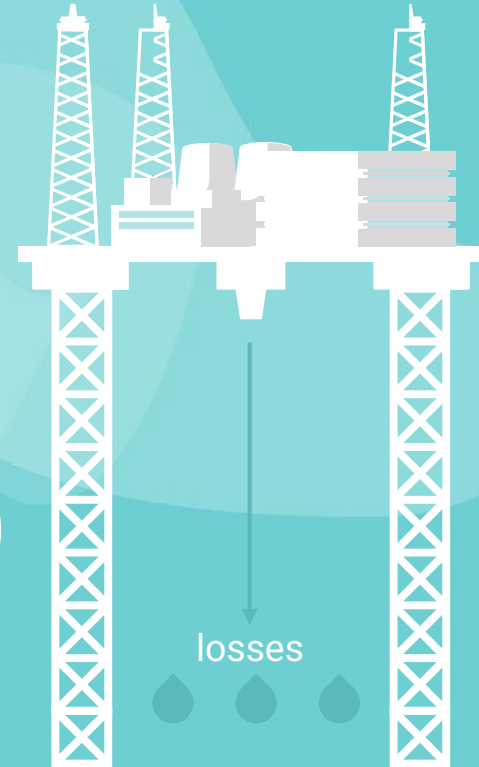
ACCORDING TO THE LATEST ISTAT DATA, IN 2020
THE **VOLUME OF WATER** INTRODUCED INTO THE
NETWORKS OF THE ITALIAN CAPITALS THAT DOES
NOT REACH USERS DUE TO NETWORK LEAKS IS
EQUAL TO **37.3%**

THIS HIGH PERCENTAGE DEPENDS ON TWO MAIN FACTORS:

- 1) HIDDEN LOSSES IN THE WATER NETWORKS EN ROUTE TO THE END USER
- 2) INEFFICIENT DISTRIBUTION DUE TO INCORRECT PRESSURE REGULATION



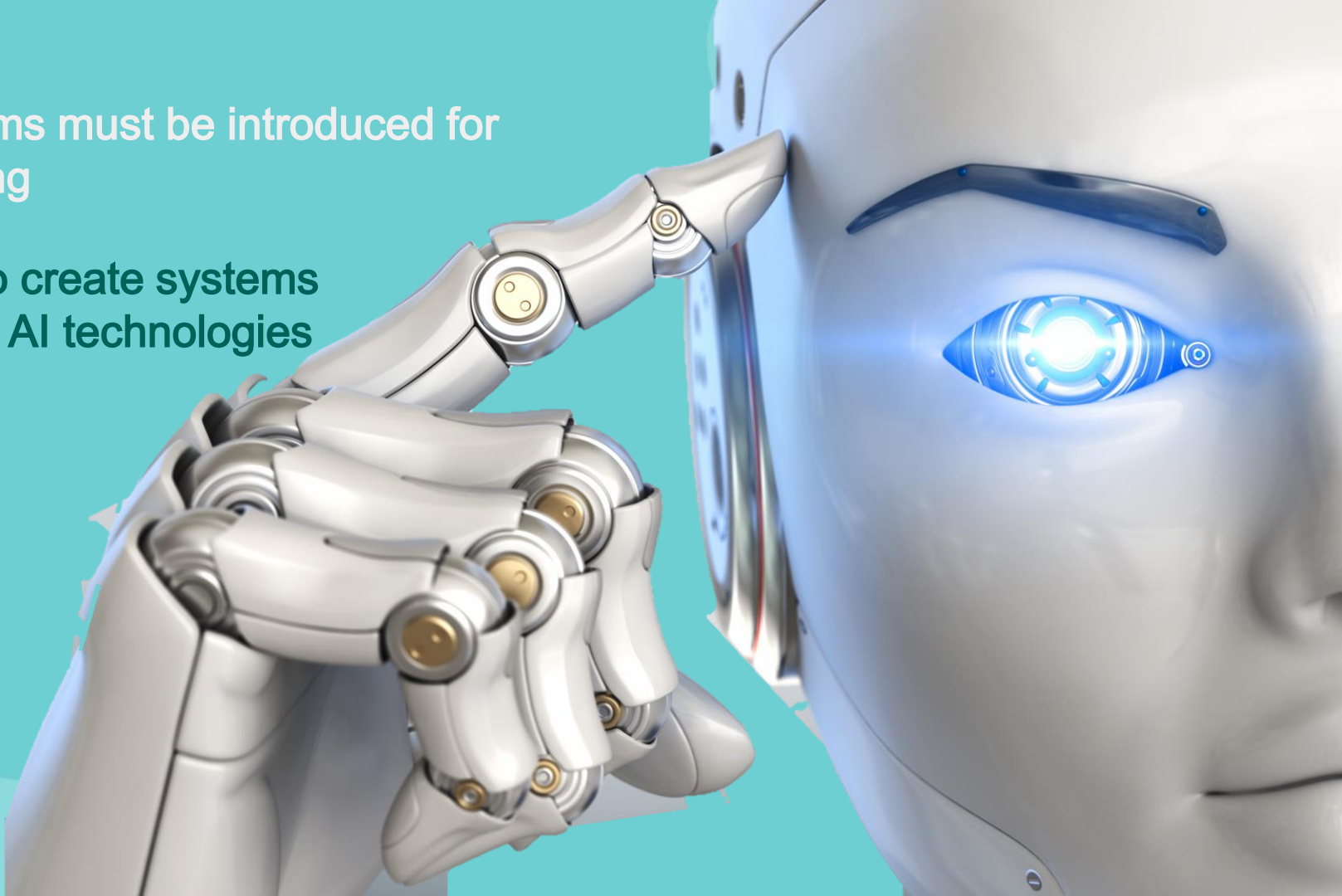
- 37.3%



**THIS PROBLEM, WHICH OFTEN OCCURS IN
WATER SYSTEMS IN ITALY AND AROUND THE
WORLD, IS THE CAUSE OF SERIOUS
ECONOMIC AND PRIMARY RESOURCE LOSSES
FOR HUMANS.**

New systems must be introduced for
water saving

We need to create systems
that exploit AI technologies
and ML



**WE FOCUS ON “GOAL 6- CLEAN WATER
AND SANITATION”**



It would also be useful to use an intelligent system to predict the condition of the water system and the equipment



A constant flow water pumping system cannot ignore the presence of a self-regulating system



It would carry out automated adjustment work on the main components of the water system and prevention work



«IF IT LOSES, YOU LOSE TOO..»

DOCTOR IN INFORMATION ENGINEERING
SANTINA ROMEO